



## LIGHT3

LASER DESKTOP MACHINE  
FOR ISO CARDS  
PERSONALIZATION

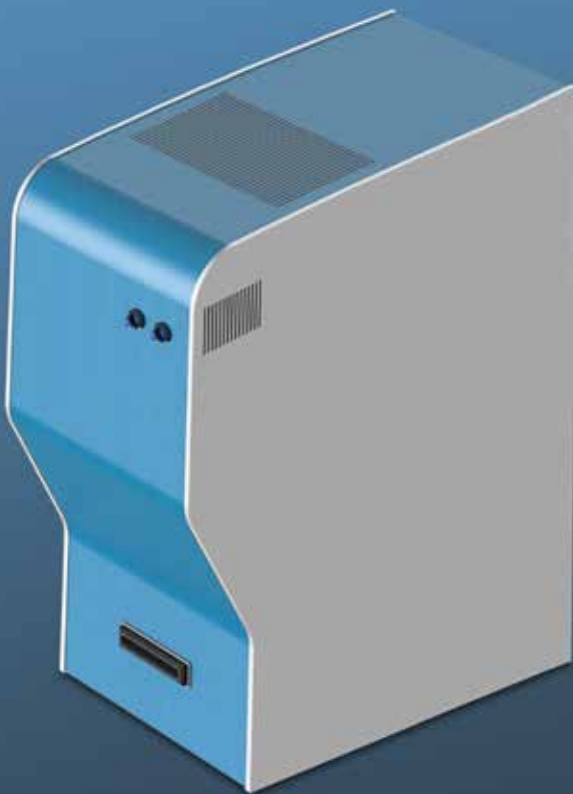


The smallest laser  
personalization machine  
for cards having the powerfull  
laser engine

# LIGHT3

IS THE SMALLEST LASER PERSONALIZATION MACHINE, FOR ISO CARDS HAVING A BUILT-IN LASER ENGINE.

- Lightweight monolithic frame
- Small physical footprint
- No consumables
- Sustainable footprint for a Green Policy
- Up-dated laser technology
- Scalable Laser Power, 3W, 8W, 20W
- Powerful and precise for almost all the possible technical approaches versus metal and plastic ISO Cards.
- Designed to support enhanced personalization features



## GENERAL SPECIFICATIONS

- Laser Writing Printer for cards according with ID-1 (ISO/IEC 7810: 2003)
- Resolution up to 2000 DPI
- Laser Engine: 1064 nm wave-length, pulsed, 3W, 8W or 20W output power
- Laser Working Field: ICAO 9303-TD1
- Manual card input
- Card Flip-over
- RFID Reader/Writer Device
- Chip Contact Reader/Writer Station
- Electric Power consumption 200 W or 400 W or 600 W upon the laser power
- Compliant with CE rules.

## PERSONALIZATION FEATURES

- Precise card positioning in the laser operational field
- Several Programmable Sets of laser parameters matching different target materials; it's possible to perform:
  - Ablation
  - Annealing
  - Foaming
  - Cosmetical Cleaning
  - Laser Indenting, specific set of characters and parameter to perform CVV2 marking code, on Signature Panel or CVV2 dedicated Panel.
  - In layer marking.
- Standard text, micro-text, barcode, QR-code, exotic signs
- Bitmap image, managing 256 different levels of laser energy.



## INTERFACE

- USB 2.0

## SOFTWARE

- Software compatible with Windows OS 10
- Capability to identify the pre-personalized card via RFID interface and retrieve the laser personalization data from the customer's database
- Marking layout freely modifiable for both sides of the card

## OPTIONS

- MLI/CLI
- Auto-positioning camera
- External exhaust Filter

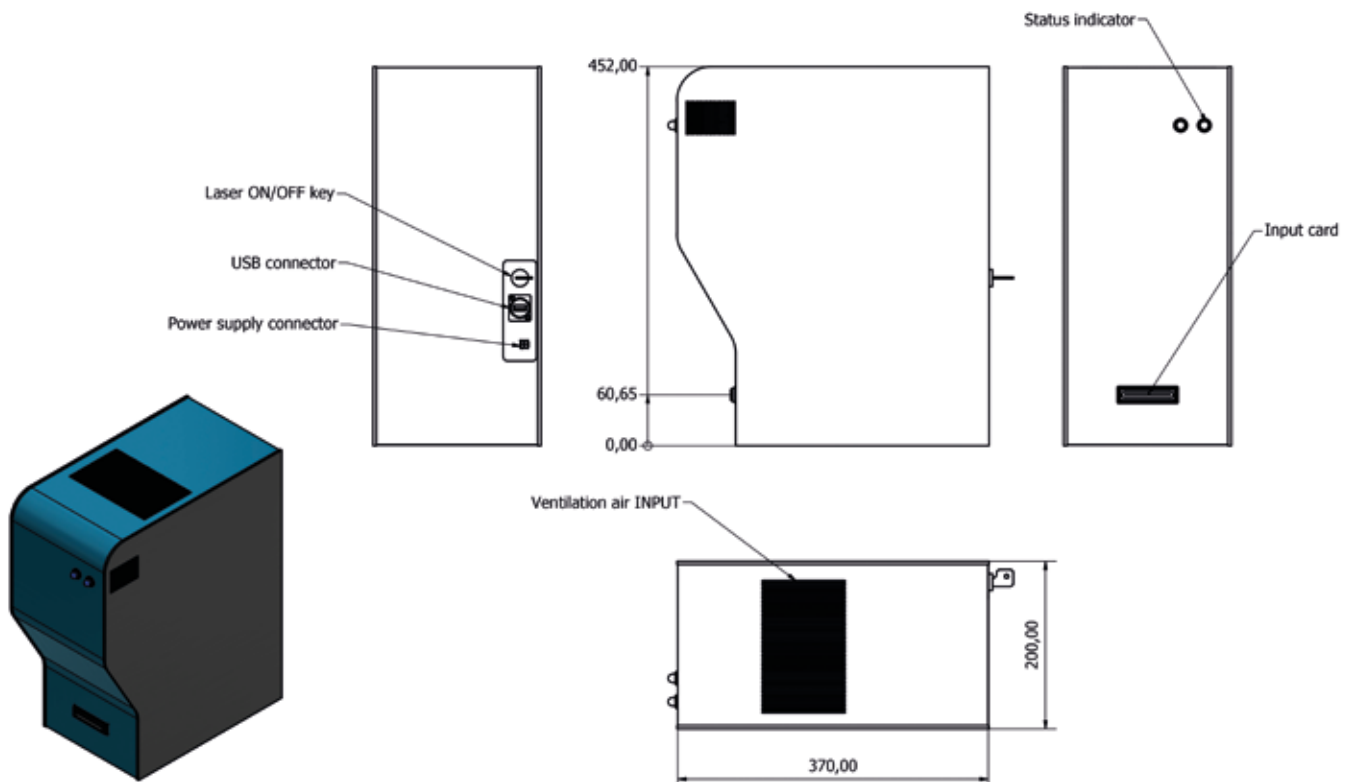
## FIELD OF USE

- Safety ID documents
- Driving Licenses
- Credit/Debit Cards

## Cards made of different materials:

- Metallic Hybrid shell
- Multilayer Polycarbonate
- Laserable multilayer PVC

## OVERALL DIMENSIONS



## CONSUMPTION DATA AND ENVIRONMENT REQUIREMENTS

Electric Power:	400 W, 190-240 VAC 50Hz AC/DC external power supply, included as standard.
Weight:	14 Kg.
Size:	200x370x420 mm
Temperature:	18° up to 30° C
Humidity:	40-70%
Air quality:	dust free, normal grade

CLASS 4 Laser Product (EN 60825-1)

THIS PRODUCT DOES NOT COMPLY  
WITH IEC 60825-1 AND 21 CFR 1040.10  
FOR USE AS SYSTEM.

USE ONLY AS A COMPONENT



Data subject to change without notice  
All stated trademarks belong to their respective owners



MARSLINE ENTERPRISES LTD  
3, KINYRA STR, GLORIA HOUSE,  
OFFICE 202, 8011 PAPHOS, CYPRUS  
TEL. +357 26 937624 - FAX +357 26 949264